

INCREMENTAL
SHAFT TYPE

S58Series

- Feature : Various resolution, 10~6000P/R
Wide range of Power supply, Customized
Prompt delivery →



Model

INCREMENTAL
SHAFT TYPE

Shaft Size
Ø6, Ø10

Resolution

S58-10

Resolution(P/R)

- 00100030004800500060
- 00720075010001200125
- 01920200025002560300
- 03600400050005120600
- 07201000102412002000
- 20482500300036005000
- 6000

Output Signal

- B : A, B
- Z : A, B, Z
- U : A, \bar{A} , B, \bar{B}
- V : A, \bar{A} , B, \bar{B} , Z, \bar{Z}

Flange Type

- C : Clamping Flange
- S : Synchro Flange

Output Form

- O : Open Collector
- V : Voltage Output
- C : Complemental
- T : Totem pole
- L : Line Driver

Cable Connecting Type

- A : Circular Connector, radial
- B : Circular Connector, axial
- C : Cable, radial
- D : Cable, axial

Power supply

- 1 : 5~24V
- 2 : 15V
- 3 : 24V
- 4 : 5V

Cable Length

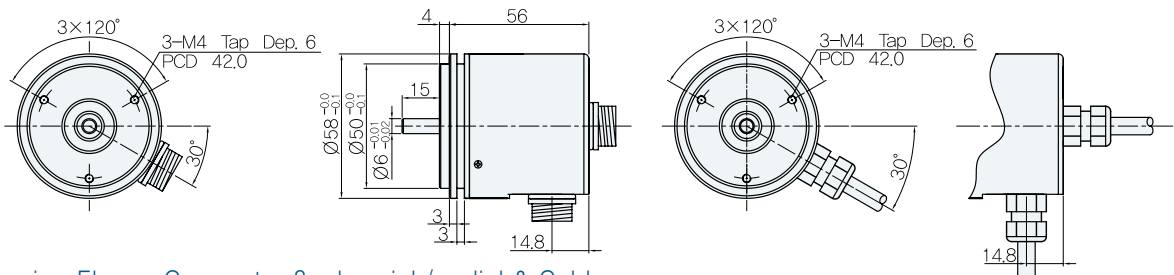
- 1 : 1.0m
- A : 10.0m



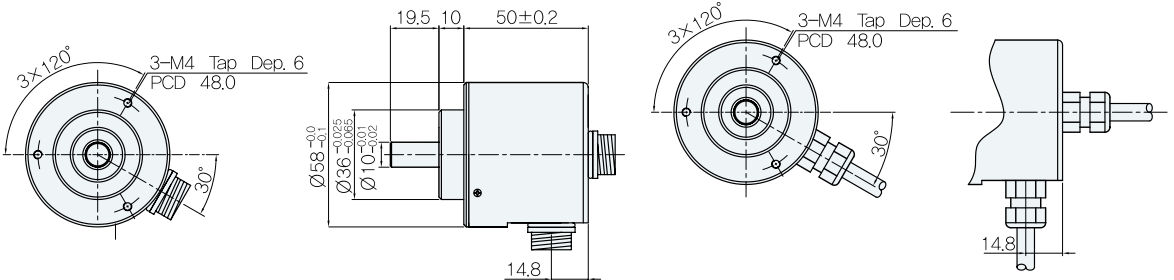
- 1) Round Connector 8-Pin socket
- 2) Cable Output
- 3) Only for C & D of Connecting type this code will be issued

External Dimension

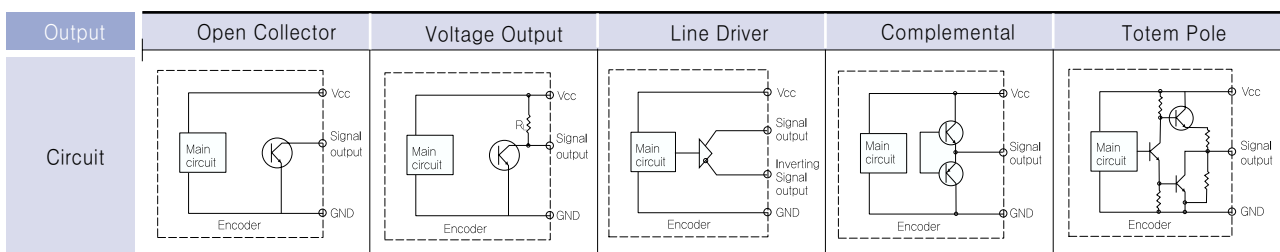
Synchro Flange Connector 8pole axial / radial & Cable



Clamping Flange Connector 8pole axial / radial & Cable



Output Circuit



Electrical Spec.

• Electrical Spec.

Resolution		10~6000P/R	
Output Type	Output Form	Power Supply	Current Consumption
	Voltage Output, Open Collector, Complementary, Totem Pole	5~24V	70mA
	Line Driver	5V	1500mA
	Line Driver	5~24V	300mA
	Maximum Response Frequency	10~2048p/r 2500~6000p/r	150kHz 300kHz

※The pulse is available up to 3,600P/R for Complementary type

※In case of more than 5,000P/R, the input power should be 45W (except Line driver)



• Rigid Spec.

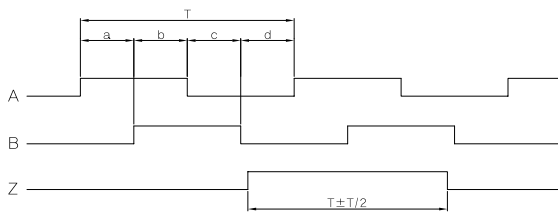
Operating Temp. Range	-10°C~+70°C (No Freezing)
Preserving Temp	-20°C~+85°C
Using Temp	35%~85%RH
Preserving Humidity	35%~90%RH
Internal Vibration	5G
Internal Shock	100G
Degree of Protection	IP 65

• Mechanical Spec.

Starting Torque	100 gf-cm
Max. No. of Rotation	6000rpm
Bearing Lifetime	30,000Hr(W/5000rpm)
Allowable Shaft Load	Radial : 2.2kg Max.
	Axial : 1.1kg Max.
Cable Type	4P(AWG26) Shield Cable

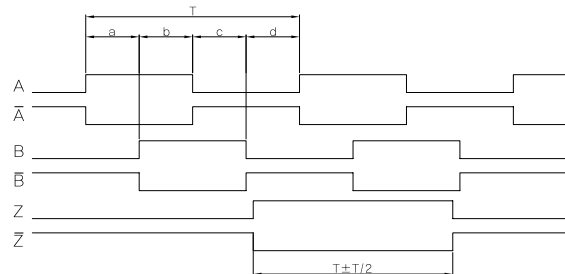
Signal Spec.

Voltage output, Open collector, Complementary, Totem pole



- $T=360^\circ/N$ (N : Resolution)
- $a+b, c+d = T/2 \pm 10$
- A, B Phase has 90° of Difference
- Z Phase is Origin signal

Line Driver



→ CW from shaft end

Cable Spec.

Cable color	Voltage output, Open collector, Complementary, Totem pole	Line driver
Red	DC+5V~+24V	DC+5V/+5~+24V
Black	GROUND	GROUND
Green	A	A
Blue	-	\bar{A}
White	B	B
Pink	-	\bar{B}
Yellow	Z	Z
Orange	-	\bar{Z}
Shield	CASE SHIELD	

Extended Cable

Length(L)	Ordering Code		
	VLZO/ZV	ZC/ZTBO/BV/BC/BT	
1.0m	OS05BAK01xA	AOS05BAK02xB	AOS05BAK04xC
3.0m	OS05BAK01xB	BOS05BAK02xC	BOS05BAK04xD
5.0m	OS05BAK01xC	COS05BAK02xD	COS05BAK04xE
7.0m	OS05BAK01xD	DOS05BAK02xE	DOS05BAK04xF
10.0m	OS05BAK01xE	EOS05BAK02xF	EOS05BAK04xG

Body : SCN16-8RN
Extended Cable : SCN16-8P

